

We'll Take Care of Your Home. So You Don't Have To.

Since 1976, Michael & Son has helped thousands of homeowners protect what matters most. Your home is one of your biggest investments, and it deserves year-round care.

That's where our Membership comes in. With scheduled seasonal inspections, friendly service reminders, and priority access when emergencies strike, your home stays protected without the hassle.

Technicians:
jobs@michaelandson.com

SERVING
24/7

We Support

You'll Enjoy:

- Proactive scheduling from our team
- Peace of mind during peak seasons
- Priority service when it matters most
- Exclusive savings on repairs & services

It's maintenance on autopilot,
with a company you trust.

MAINTENANCE = SAVINGS

Prevent Breakdowns with
Seasonal Maintenance
from Michael & Son

- Increase Your Home's Efficiency
- Save on Energy Costs
- Extend the Life of your HVAC, Plumbing, and Electrical Systems
- Reduce the Risk of Emergency Repairs
- Maintain Manufacturer Warranties
- Save 15% on All Repairs

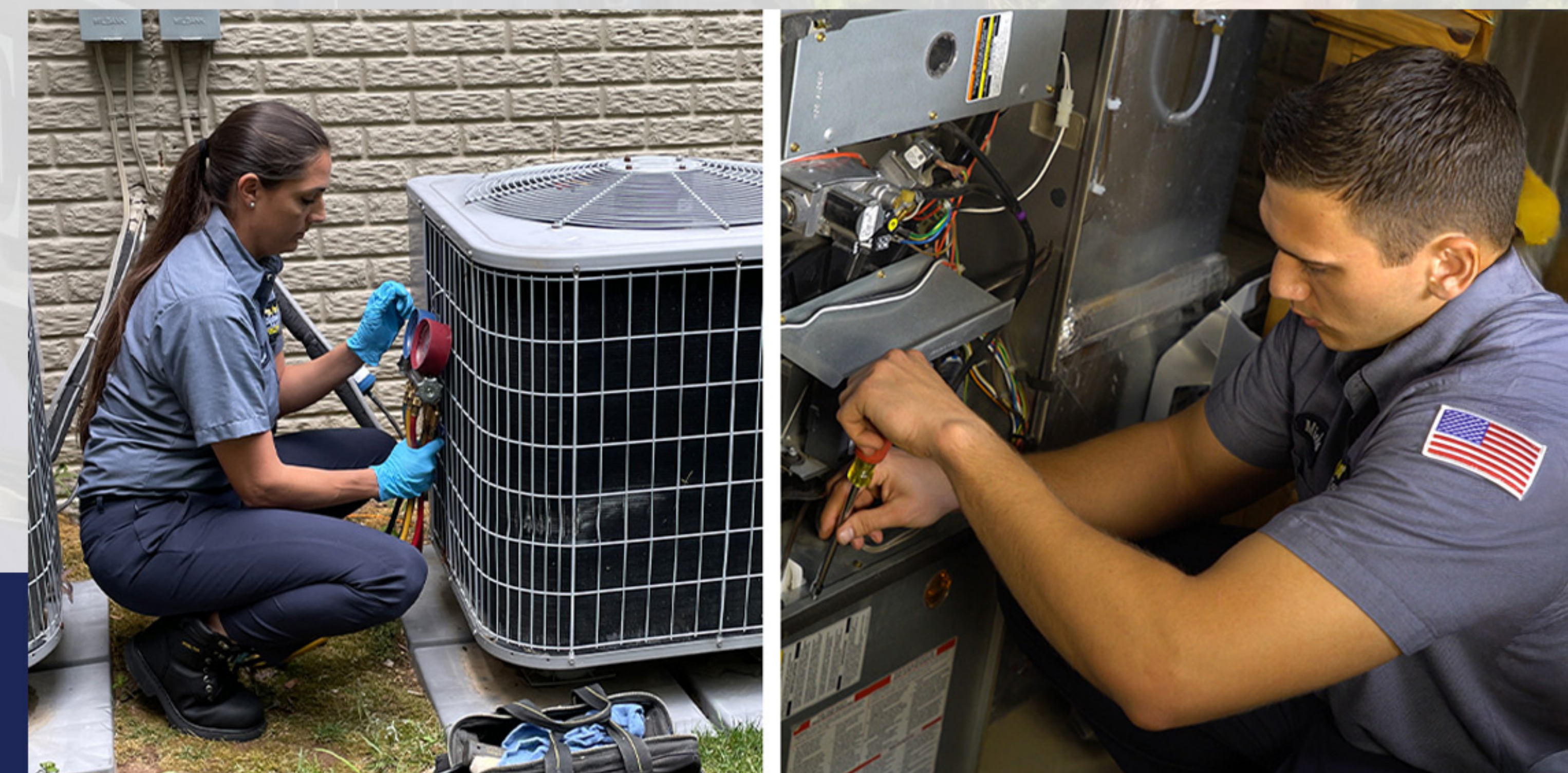
Simple Steps to Increase The Efficiency and Reliability of the Systems in Your Home

- Replace air filters every 60-90 days
- Maintain HVAC with bi-annual service
 - Clear outdoor unit of any debris (Allow 2 feet of clearance for airflow)
- Schedule a plumbing and electrical safety inspection once a year

Michael & Son

Michael & Son
SERVICES
PLUMBING • ELECTRICAL • HVAC

MEMBERSHIP PLAN



**THE COMPREHENSIVE
MAINTENANCE PLAN
FOR YOUR HOME**

Call 800-948-MIKE or visit
michaelandson.com
to get started

SCAN TO
LEARN MORE
OR SIGN UP



800.948.6453
MICHAELANDSON.COM

A Smarter Way to Protect Your Home

Tired of unexpected breakdowns?

Join the Michael & Son Essential Membership for stress-free home protection.

From seasonal tune-ups to priority service and exclusive discounts, we make home maintenance easy.

Keeping You Covered Year-Round

- Save money on repairs and replacements
- Get ahead of costly issues with regular inspections
- Priority scheduling – even during busy seasons
- Let our team handle the scheduling for you
- Keep your home running efficiently year-round

Features & Benefits

- ✓ Bi-Annual HVAC Tune-Ups with 24-Point Inspection
- ✓ Whole-Home Plumbing Inspection
- ✓ Whole-Home Electrical Inspection
- ✓ Priority Service for HVAC, Plumbing & Electrical Services
- ✓ Dispatch & Diagnostic Fee Discount
- ✓ 15% Off HVAC, Plumbing & Electrical Services
- ✓ App Access for Alerts & Scheduling
- ✓ Service Reminders from the Michael & Son team
- ✓ Tied to Registered HVAC System (by serial number)
- ✓ 1-Year Free Membership with New System Install
- ✓ Transferable to a New Homeowner or Your New Property
- ✓ Auto-Renews with 30-Day Cancellation Option*
- ✓ Smart Home Features Available for an additional fee

\$24.95/month or \$299/year

Need to cover more than one system?

Add additional zones for just
\$19.95/month or \$239/year per system.

Want smart home features?

Upgrade your app experience for
\$7/month or \$84/year.

Helpful Homeowner Information

What's Covered?

- HVAC, plumbing, and electrical systems tied to your registered equipment
- Annual inspections & priority scheduling
- 15% off most services (up to \$1,000 per visit)

What is a Zone?

A zone is any additional heating or cooling system in your home – like a second HVAC unit or a boiler. Each zone has its own controls and needs regular inspections. **Your membership covers one primary system. Add extra zones anytime.**

What's NOT Covered?

- Pre-existing issues
- Fireplaces, humidifiers, dehumidifiers
- Oil-burning furnaces, ductless, geothermal, or commercial systems
- Disposable parts or anything outside of the main system housing

Can I transfer my membership?

Yes – just notify us within 30 days if you're moving. We'll help transfer the plan to the new property or homeowner.

Need to Cancel?

No problem.

Cancel anytime with 30 days' notice.

Note: If you cancel within 6 months of using discounted services, you may owe back the difference.

Download
Our App:



Download on the
App Store



GET IT ON
Google Play